

# A case report on Giant lipoma

R Lavanya<sup>1</sup>, S K Sridevi<sup>2</sup>, P Viswanathan<sup>3\*</sup>, R Bakaran<sup>4</sup>, R Renjith Singh<sup>5</sup>

{<sup>1,2</sup>Post Graduate, <sup>3</sup>Professor, Department of Pathology}, {<sup>4</sup>Professor, <sup>5</sup>PG Student, Department of Surgery}, Rajah Muthiah Medical College, Annamalai University, Chidambaram-608002, Tamil Nadu, INDIA.

Email: [drpviswanathan2014@gmail.com](mailto:drpviswanathan2014@gmail.com)

## Abstract

Average dimensions of lipoma are around 3cm. Lipomas greater than 10cm is rare and lipomas in the nape of the neck are generally hibernomas. A 77 year old man presented with a 25cm mass in the nape of the neck and he was comfortable with the same without any constitutional symptoms.

**Keywords:** Fibrolipoma/lipoma.

## \*Address for Correspondence:

Dr. P. Viswanathan, Post Graduate, Department of Pathology, Rajah Muthiah Medical College, Annamalai University, Chidambaram-608002, Tamil Nadu, INDIA.

Email: [drpviswanathan2014@gmail.com](mailto:drpviswanathan2014@gmail.com)

Received Date: 03/11/2015 Revised Date: 03/11/2015 Accepted Date: 03/11/2015

Access this article online	
Quick Response Code:	Website: <a href="http://www.statperson.com">www.statperson.com</a>
	DOI: 20 November 2015

## INTRODUCTION

Lipoma is a benign tumor originating from mature adipocytes. Typical lipomas are asymptomatic, subcutaneous, round or discoid mass with soft/doughy consistency. They are slow growing and freely mobile. They can be solitary or multiple. Based on location classified into

1. Subcutaneous / superficial lipoma
2. Deep lipomas

Various histological types include

- Angiolipoma
- Myolipoma
- Chondroid lipoma
- Spindle cell lipoma
- Pleomorphic lipoma
- Benign lipoblastoma
- Angiomyolipoma

- Myelolipoma
- Neural fibrolipoma
- Hibernoma

Multiple lipomas can be part of many syndromes including Cowden syndrome, Bannayan-Zonana syndrome, Frohlich syndrome and Proteus syndrome.

## CASE HISTORY

77yr old male, presented to the skin OPD with scabies. Since he had a mass in the neck, he was referred to the Surgical Department. The mass was excised in toto and sent for histological evaluation. The post operative period was uneventful and the patient left the hospital comfortably.

### Macroscopy

Skin covered soft tissue mass in the shape of football measuring 25cm in diameter and weighing 7.2kgs. On cut section shiny yellow areas with vague loculation present. No areas of hemorrhage or necrosis was observed. (fig)Plate III

### Histology

A skin covered soft tissue tumor made up of mature benign adipocytes interspersed with blood vessels which are congested. Adipocytes are divided into vague lobules by fibro-collagenous tissue which shows hyalinization at places. Inflammatory cell infiltrates predominantly composed of lymphocytes seen in the dermo-epidermal junction. Few blood vessels with thickened walls were also observed. (fig)Plate IV

### Plate I- Clinical Picture



Figure 1: Soft tissue mass hanging from the nape of neck which is used by the gentleman like a pillow for sleeping

### Plate II – Excised Mass



Figure 2



Figure 3: Skin covered soft tissue mass measuring 25cm in diameter

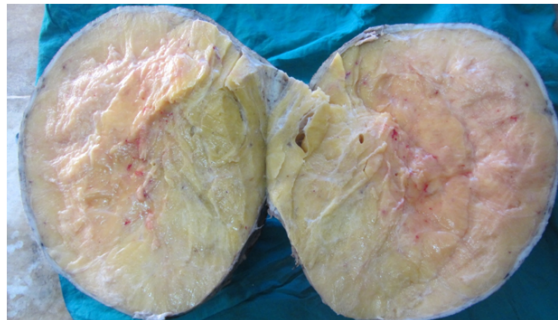


Figure 4: Cut section showing greasy yellow areas interspersed with vessels

### PLATE IV – MICROSCOPIC IMAGES

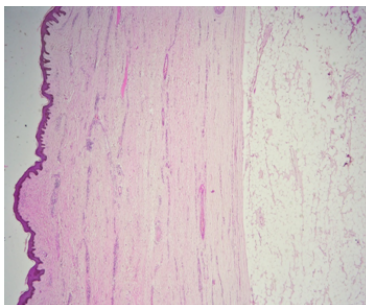


Figure 5: H and E STAINED 2x

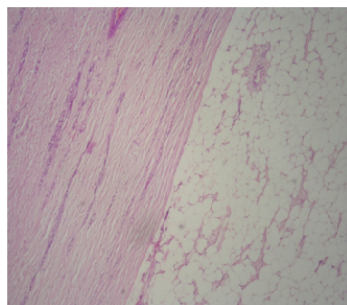


Figure 6: H and E STAINED 10x

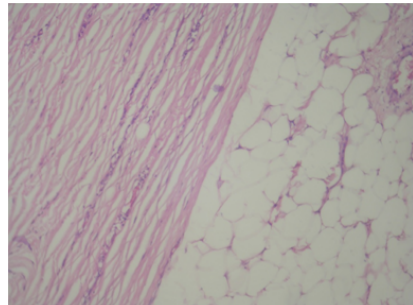


Figure 7: H and E STAINED 40x

Skin covered well circumscribed tumor composed of adipocytes which is divided into vague lobules by fibro-collagenous tissue

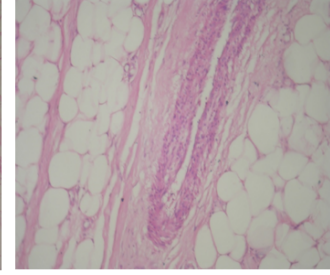
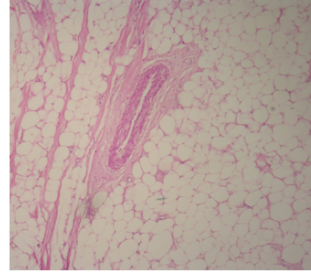
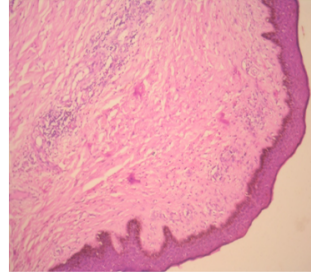
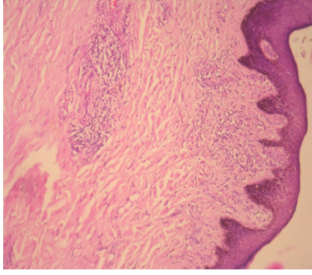


Figure 8: H and E STAINED 10x

Figure 9: H and E STAINED 10x

Figure 10: H and E STAINED 10x

Figure 11: H and E STAINED 40x

## DISCUSSION

Lipomas are the most common benign tumors which present around 40-60yrs of age and uncommon in less than 20yrs of age. The size varies from few mm to 5cms (average 3 cms). The tumor gains in dimension only during the initial period and remains so after that. There is a slight male preponderance. The common type of presentation is subcutaneous or superficial which occurs on torso, shoulder and abdomen. Deep lipomas are rare and detected at late stages of development; they are seen in the forehead, scalp, thorax, mediastinum, chest wall, retroperitoneum as well as para testicular region. Lipomas are also seen in the GIT. The fat cells in lipoma are grouped together and present as lobular masses with interspersed delicate fibrous septa. There can be vessels which may be congested. The important differential diagnosis is a well differentiated Liposarcoma where lipoblasts with hyper chromatic nuclei can be observed.

## CONCLUSION

The size of lipomas varies from few mm to 5cms (on an average 3cms) and lipomas greater than 10cms are rare. Superficial lipomas hardly cause any symptoms and are excised for cosmetic reasons where as deep ones can pose various clinical symptoms as per the location. The present patient had this tumor for the past 10 years and had never experienced any discomfort.

## REFERENCE

1. Enzinger and Weiss's Soft Tissue Tumors, fourth edition.
2. Rydholm A, Berg No.size,site and clinical incidence of lipoma;factors in differential diagnosis of lipoma and sarcoma. Acta Orthop Scand 54:929, 1983.
3. Goodman HJ Richards AM, Kleasen MF. Use of magnetic resonance imaging on a larger lipoma of the hand: a case report.Aust NZJ.Surg67:489,1997.
4. Saitoh Y, Hama T, Ishizaka S, et al.Fibrolipoma of the parotid in a child.Am J Otolaryngol 16:433,1995.

Source of Support: None Declared  
Conflict of Interest: None Declared